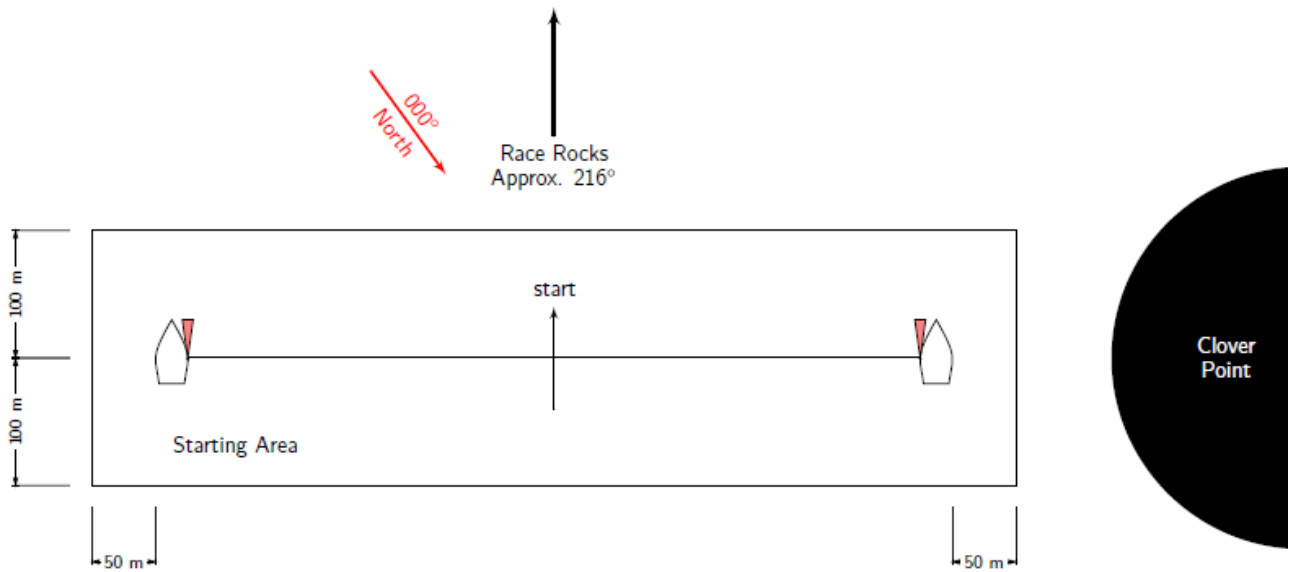


START AREA and START SIGNALS



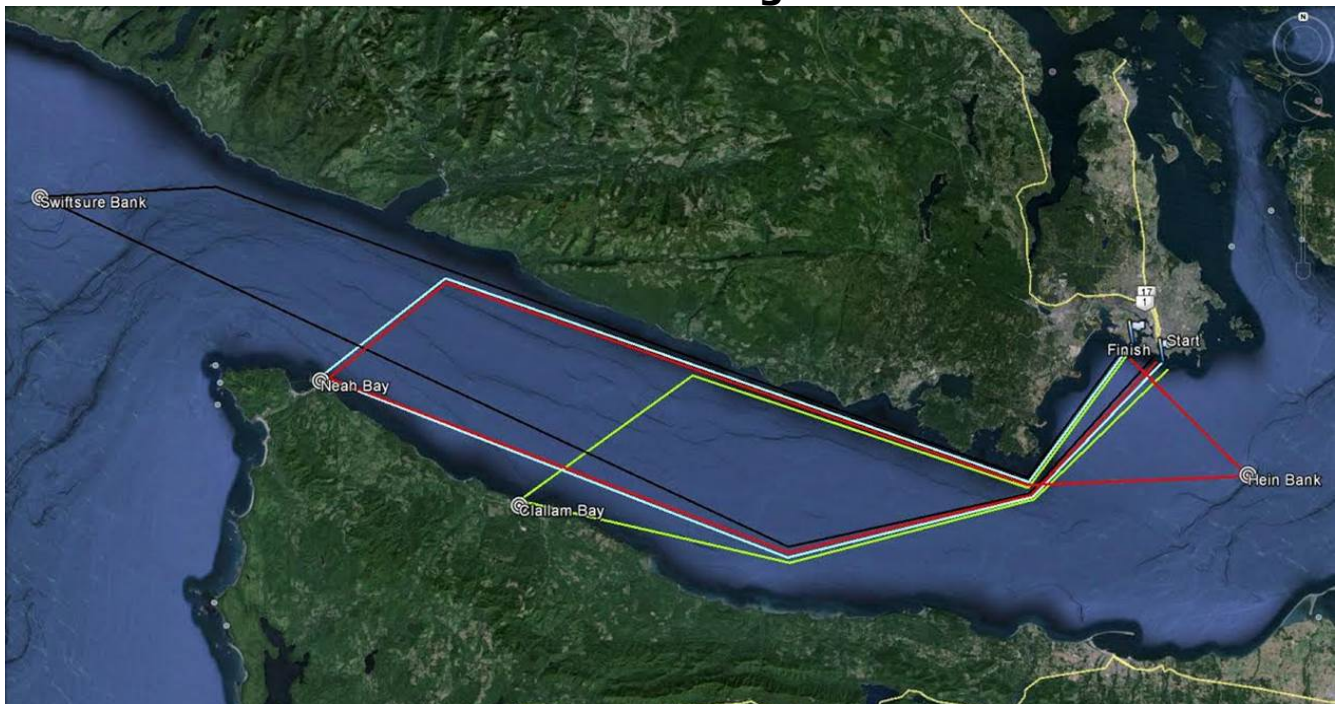
Races and Signals

Note: The Race Committee may vary the times of the Warning signal at its sole discretion and, if this occurs, the timing of the race sequence will comply with SI 9.1.

Time	Signal	Flag	Sound	Race Starting
0851	Warning	Numeral 1 Raised	Horn	Swiftsure Lightship Classic for Monohulls & Hein Bank Race for Monohulls
0856	Prep	"P" flag Raised	Horn	
0859	1-minute	"P" flag Lowered	Horn	
0900	Start	Numeral 1 Lowered	Gun	
0901	Warning	Numeral 2 Raised	Horn	Juan de Fuca Race for Multihulls
0906	Prep	"P" flag Raised	Horn	
0909	1-minute	"P" flag Lowered	Horn	
0910	Start	Numeral 2 Lowered	Gun	
0911	Warning	Numeral 3 Raised	Horn	Cape Flattery Race for Monohulls
0916	Prep	"P" flag Raised	Horn	
0919	1-minute	"P" flag Lowered	Horn	
0920	Start	Numeral 3 Lowered	Gun	

0921	Warning	Numeral 4 Raised	Horn	Juan de Fuca Race for Monohulls
0926	Prep	"P" flag Raised	Horn	
0929	1-minute	"P" flag Lowered	Horn	
0930	Start	Numeral 4 Lowered	Gun	
0931	Warning	Numeral 5 Raised	Horn	Inshore Classic: Racing Division
0936	Prep	"P" flag Raised	Horn	
0939	1-minute	"P" flag Lowered	Horn	
0940	Start	Numeral 5 Lowered	Gun	
0941	Warning	Numeral 6 Raised	Horn	Inshore Classic: Cruising Division
0946	Prep	"P" flag Raised	Horn	
0949	1-minute	"P" flag Lowered	Horn	
0950	Start	Numeral 6 Lowered	Gun	

Swiftsure Four Long Courses



Swiftsure International Yacht Race – Finishing Line

