

Swiftsure International Yacht Race

May 28 – May 30

Safety Briefing

May 27, 2022



SWIFTSURE

Agenda

Introductions

The Swiftsure Race

The Start

Safety Requirements

Keeping Track of Yachts

VHF Coverage

Deployment Schedule Race Morning

JRCC Support

SAR Demonstration

Points of Contact for Swiftsure

Questions/comments

Introductions

RVYC Commodore

Event Chair

Principle Race Officer

HMCS Brandon

Patrol Craft Training Vessel

HMCS Malahat RHIB

CCG CAPE Calvert

Joint Rescue Coordination Centre

RCMP

RVYC RHIB Eagle Dancer

RCMSAR Unit 33

RCMSAR Unit 35

Marine Communications and Traffic Services

Harbour Master

International Judge

Communications Officer

Photographer boats

Clover Point Commentators

RVYC RHIB Beaker

Canada Border Services

Other



The Swiftsure Race

SWIFTSURE



©Brian Webb



SWIFTSURE

Race Courses

1. Swiftsure Lightship Classic – 138.2 nm

Swiftsure Bank – Virtual Mark at

2. Cape Flattery – 101.9 nm

Neah Bay – PCTV (ORCA class)

3. Hein Bank – 118.1 nm

– ODAS buoy 46088 (Y FL (4) Y 2OS ODAS)

4. Juan de Fuca – 78.7 nm

Clallam Bay – Virtual Mark at 48.15.90 N, 124.17.30 W

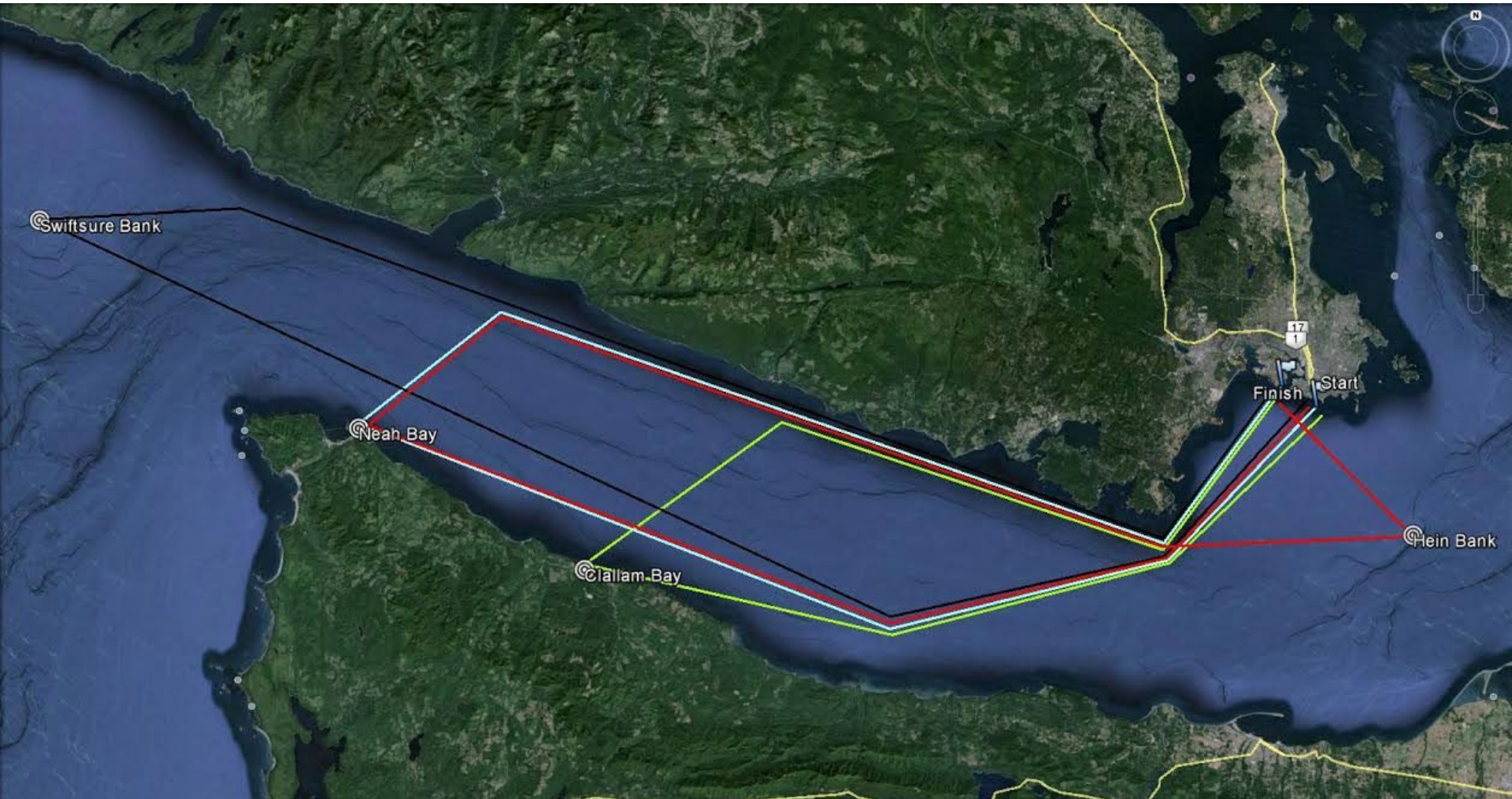
5. Swiftsure Inshore Classic

- course depends on wind race morning
- finish in Cadboro Bay



SWIFTSURE

Race Courses





Some Stats

76th running of Swiftsure

Number of Boats:

Swiftsure Bank	10
Hein Bank	8
Cape Flattery	41
Cape Flattery Multihulls	8
Juan de Fuca	35
Subtotal	102
Inshore Classic	20
GRAND TOTAL	122

About 230 volunteers

Generous support by sponsors



Swiftsure...Always a Challenge





The Start – HMCS Brandon





The Start Line

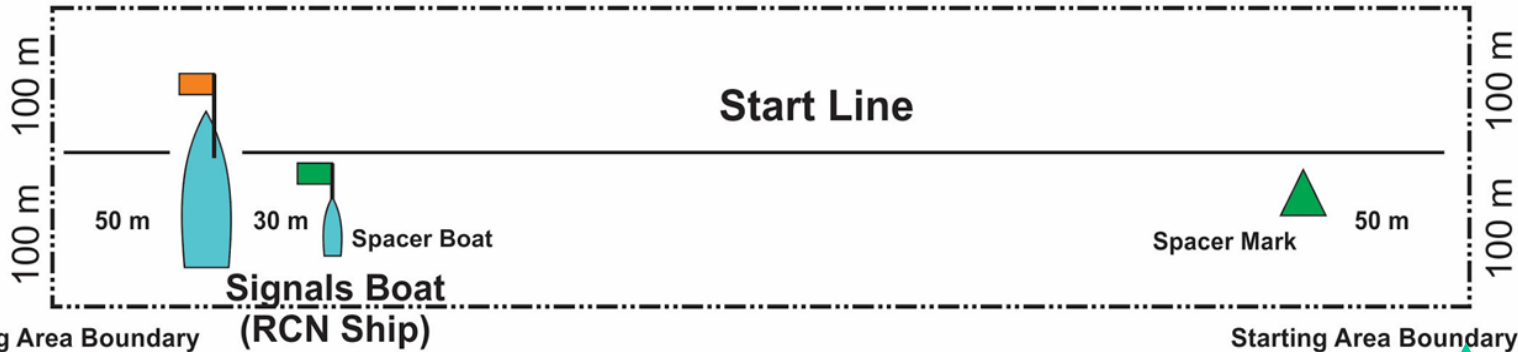
SWIFTSURE

↑
To Race Rocks
Approximate Course
216 Degrees

↙
North

Starting Area Boundary

Starting Area Boundary



Starting Area Boundary

Starting Area Boundary

↑
RCMSAR Unit 33

↑
RCMSAR Unit 35

Not to Scale



Authorized Boats in Starting Area

- Only sailboats in next start permitted in the starting area
- Power boats permitted are:
 - RVYC RHIB Eagle Dancer (spacer boat) – (green flag)
 - HMCS Malahat RHIB with Swiftsure judge (white flag)
 - Royal Canadian Marine SAR RHIBs (Units 33 & 35)
 - JRCC RHIB Victoria I
 - Photographers' Boats (pink flags)
 - RHIB “Beaker”
 - Prince of Whales RHIB
 - RCMP if needed (blue flashing light)



Coordination of Resources for Start

- **In case of MOB**
 - JRCC coordinates SAR
- **In case of major collision or injury**
 - RCMP on scene commander
- **In case of errant spectator boat**
 - RCMSAR requests
 - RCMP issues orders with blue flashing light



Safety Requirements



- Safety Equipment Requirements (supplement requirements of gov't authorities)
 - Hull and structure (e.g., stability, strength of build)
 - Boat safety equipment
 - Personal safety equipment
 - Gear (e.g., second steering mechanism, safety diagram)
 - Practice MOB procedures
 - Experienced crew, trained, fit to "handle bad weather"
 - Person in Charge responsible for safety of boat and crew designate to take over if Person in Charge incapacitated



World Sailing's Racing Rules of Sailing

Fundamental Rules:

#1.1 shall give all possible help to any person or vessel in danger

#1.2 shall carry adequate life-saving equipment for all persons on board

#4 Decision to participate in a race or to continue racing is hers alone



Swiftsure Safety Policy and Information (<https://www.swiftsure.org/safety/>)

Safety Policy

- Safety Considerations – Weather and Currents
 - Crew Lists
 - Communication with Fleet
 - Location of Fleet
 - Minimum Safety Requirements
- Search and Rescue Support

Meteorological Monitoring Protocol

Cautionary Weather Protocol

- Dangerous Weather Protocol
- Race Abandonment
- Wind and Sea Monitoring



Safety Instructions to Boats

- Accurate crew lists
- Nav charts showing Traffic Separation Scheme
- IRPCAS rule 10 - traffic separation lanes
- Must wear lifejackets sunset to sunrise
- Safety protocol when to wear PFDs & tethers during day
- PFD marked with wearer's or boat's name
- Floatable gear with boat name & report loss



Safety Instructions to Boats

- Security zones for US Navy vessels & tankers
- In emergency call Coast Guard
- Use engine to avoid commercial traffic, to aid another vessel or crew, or for SAR activities
- MCTS on VHF 09 for location, direction, & speed of commercial traffic
- Post race safety inspection
- Distance from Whales



Keeping Track of Boats

- SPOT Tracking System (Four Long Courses)
- Search for non-reporting boats
 - Attempt to contact on VHF 26
 - Suffix to MCTS semi-hourly broadcasts channel 09
 - One cell phone must be on boats
 - Legal requirement to monitor channel 16
 - Most have DSC and have registered their MMSI



Keeping Track of Boats

- Crew lists available from Swiftsure communications centre at CRD
 - JRCC has direct access to Swiftsure's system
 - Information about all boats including names of crew and emergency contacts for each crew member
- Record destination of yachts withdrawing from race
- Rounding marks record and report rounding times
- Swiftsure Results page identifies yachts soon after finishing



Keeping Track of Boats

SWIFTSURE

Swiftsure Lightship Classic (Swiftsure Bank):

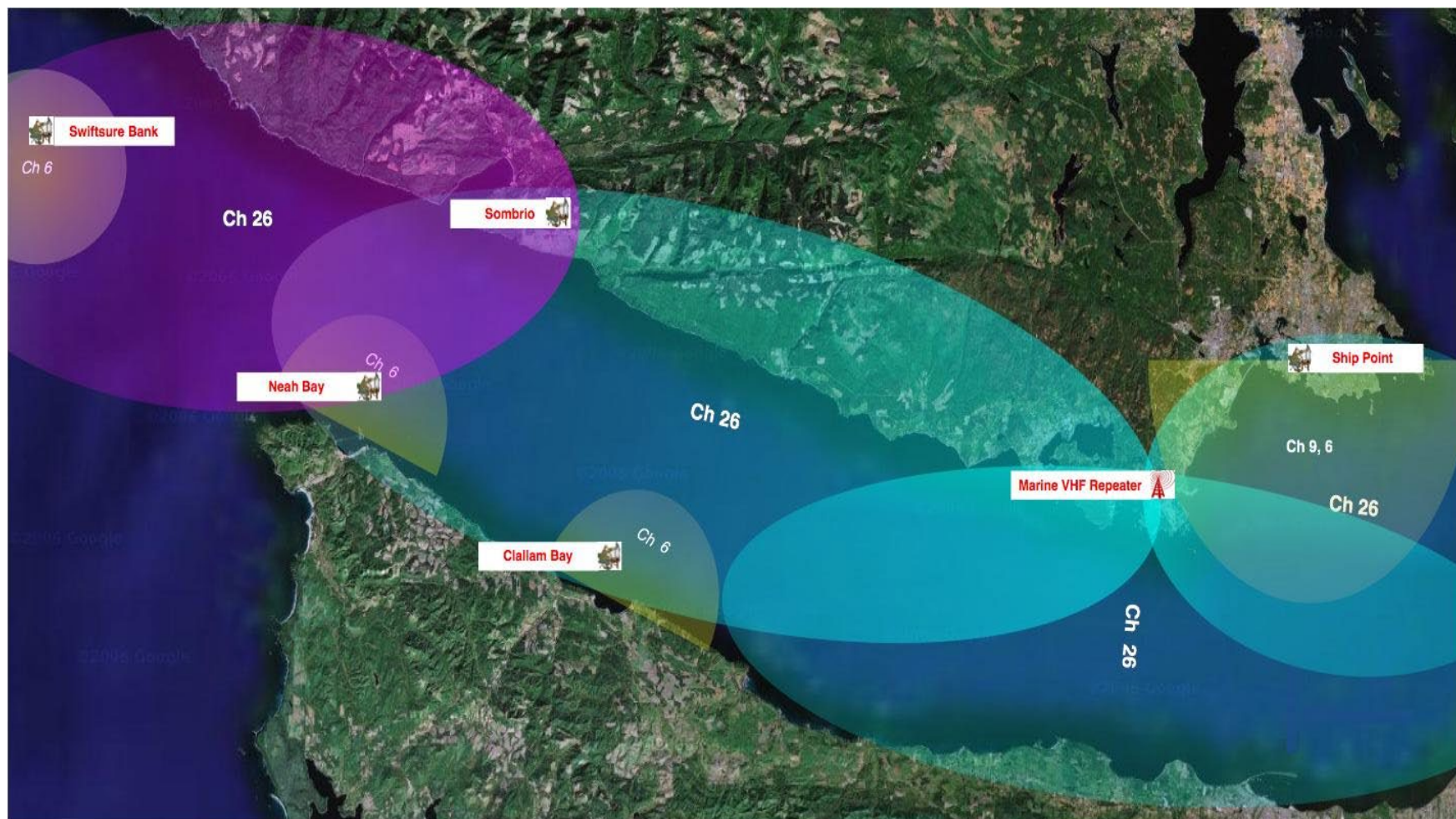
- Outbound & Inbound when cross $124^{\circ} 00.00'$
- Outbound & Inbound when cross $124^{\circ} 45.00'$

Hein Bank, Cape Flattery (Neah Bay) and Juan de Fuca (Clallam Bay):

- Outbound & Inbound when cross $124^{\circ} 00.00'$



VHF Radio Coverage





© Richard Gulbransen
MarineTraffic.com

Deployment May 28



- 0600 Race Committee & VIPs meet at Y Jetty which is on the Dockyard side near the Canex & board HMCS Brandon
- 0615 Race Committee for Neah Bay board PCT (Orca) at D Jetty;
- 0730 Eagle Dancer sets Green Spacer Buoy
- 0730 RHIBs “Flag -Up” and Go
- 0720 HMCS Brandon arrives in start area
- 0730 HMCS Brandon anchored in position
- 0800 Eagle Dancer arrive in start area
- 0800 RCMP & CGG vessels arrive in start area
- 0800 RCMSAR vessels arrive in start area & position
- 0800 Navy National Security Team Vessel will arrive at the start area
- 0830 Spacer vessel Eagle Dancer moves into position
- 0851 nine minute warning signal for first start
 - 10 minutes between each start
 - 5 starts



JRCC Support for Swiftsure

- JRCC's role in case of marine emergency
- JRCC's preparations for Swiftsure race
- Deployment of SAR resources

Stephen Payne (Regional Supervisor, Search and Rescue)



442 Squadron SAR Demo



Beacon Hill



See Search & Rescue (SAR) Demonstration Plan, May 25, 2019



Lat Long Position for Demo Box Mark Vessels

RCMSAR 33 RHIB	SE - 48° 24' 02.3"N 123° 20' 32.1"W
RCMSAR 35 RHIB	NE - 48° 24' 12.5"N 123° 20' 35.1"W
CCG Victoria I RHIB	SW - 48° 23' 58.0"N 123° 21' 16.4"W
HMCS Malahat RHIB	NW - 48° 24' 08.1"N 123° 21' 19.4"W



Quick References (URL's)

SWIFTSURE

- **Sailing Instructions**
- <https://www.swiftsure.org/sailing-instructions/>
- **Notice of Race & Safety Equipment Requirements**
- <https://www.swiftsure.org/registration/notices-of-race-safety-equipment-requirements/>
- **Safety Policy and Meteorology Protocol**
- <https://www.swiftsure.org/safety/>



Points of Contact during race

Swiftsure Radio Room

- Single point of contact
- Will triage all calls as a priority
- 250 360 3306

John Abel, Principal Race Officer, 250 380 8989

Bill DiGuistini Race Director, 250 516-6056

<https://www.swiftsure.org/>



Royal Victoria Yacht Club presents

SWIFTSURE 2019

INTERNATIONAL YACHT RACE

MAY
23-27
2019



ALWAYS A CHALLENGE

Questions? Comments?